



Waterfall EDGE SHELF

LQS OPEN STORAGE

The LogiQuip® Waterfall Edge Shelf features a smooth, rounded edge along the width of the shelf, replacing the traditional raised edge that can damage items as they are moved in and out of storage. These strong and durable shelves come in a variety of sizes, are available in kits and are compatible with LogiQuip 1-inch round posts.

WATERFALL EDGE SHELF DESIGN

Our Waterfall Edge Design allows fragile items, like sterile packaging, to slide easily off the edge without the worry of snagging or tearing.

WATERFALL EDGE SHELF KITS

Waterfall Edge Shelf Kits are available in six configurations for turnkey storage options.

CARBON STEEL CORE

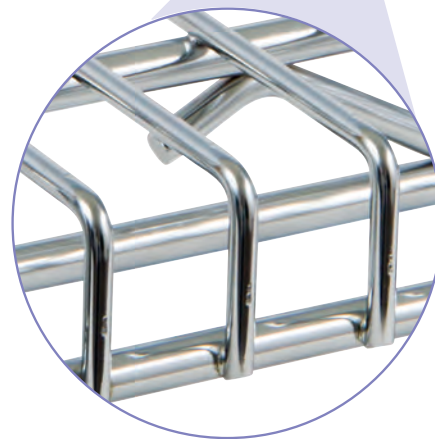
The Waterfall Shelf, like all of LogiQuip's wire shelving, starts with a Carbon Steel Core. This helps to ensure a strong, durable base for all of your open storage needs.

DOUBLE CHROME PLATING

Each carbon steel shelf is Double Chrome Plated for a smooth, bright finish that minimizes damage to stored items.

LIMITED 5-YEAR WARRANTY

LogiQuip products are covered by a Limited 5-Year Warranty from date of receipt against defect in materials or workmanship under normal use and service, excluding Electronic Components, Cart Covers, Custom Products, and LogiCell Tambour Doors. During this period, LogiQuip will, in its sole discretion, repair defects in materials or workmanship that existed when the product was received or replace the product. Visit [LogiQuip.com/Warranty](https://www.logiquip.com/Warranty) for more details.



48" WATERFALL SHELF
MODEL # 2448CHWF

WATERFALL SHELF & KIT MODELS

SHELF MODELS	DIMENSIONS (D x W IN.)	DESCRIPTION	WEIGHT MAX LBS.
2448CHWF	24 x 48	Chrome LQS Shelf with Waterfall Edge	600
2460CHWF	24 x 60	Chrome LQS Shelf with Waterfall Edge	520
2472CHWF	24 x 72	Chrome LQS Shelf with Waterfall Edge	320



MODEL # 2460CHWF

KIT * MODELS	DIMENSIONS (D x W x H IN.)	DESCRIPTION
MB456CWC-4	24 x 48 x 69	2 Flat Shelves, 4 Waterfall Shelves
MB457CWC-4	24 x 48 x 80	2 Flat Shelves, 4 Waterfall Shelves
MB457CWC-6	24 x 48 x 80	2 Flat Shelves, 6 Waterfall Shelves
MB466CWC-4	24 x 60 x 69	2 Flat Shelves, 4 Waterfall Shelves
MB467CWC-4	24 x 60 x 80	2 Flat Shelves, 4 Waterfall Shelves
MB467CWC-6	24 x 60 x 80	2 Flat Shelves, 6 Waterfall Shelves
MB476CWC-4	24 x 72 x 69	2 Flat Shelves, 4 Waterfall Shelves
MB477CWC-4	24 x 72 x 80	2 Flat Shelves, 4 Waterfall Shelves
MB477CWC-6	24 x 72 x 80	2 Flat Shelves, 6 Waterfall Shelves



MODEL # MB466CWC-6

*All Kit Models are mobile, have four 4 casters; two (2) swivel/brake, two (2) swivel and a dust cover.

LABEL HOLDER MODELS	SIZE	DESCRIPTION
LH48BLWF	48"	Blue Waterfall Shelf Label Holder
LH48CLWF	48"	Clear Waterfall Shelf Label Holder
LH60BLWF	60"	Blue Waterfall Shelf Label Holder
LH60CLWF	60"	Clear Waterfall Shelf Label Holder
LH72BLWF	72"	Blue Waterfall Shelf Label Holder
LH72CLWF	72"	Clear Waterfall Shelf Label Holder



Also available in Clear

